



# BISHOP COTTON WOMEN'S CHRISTIAN COLLEGE

No 19, 3rd cross, C.S.I Compound Bangalore - 560027

## Students Feedback For The Academic Year 2022-2023

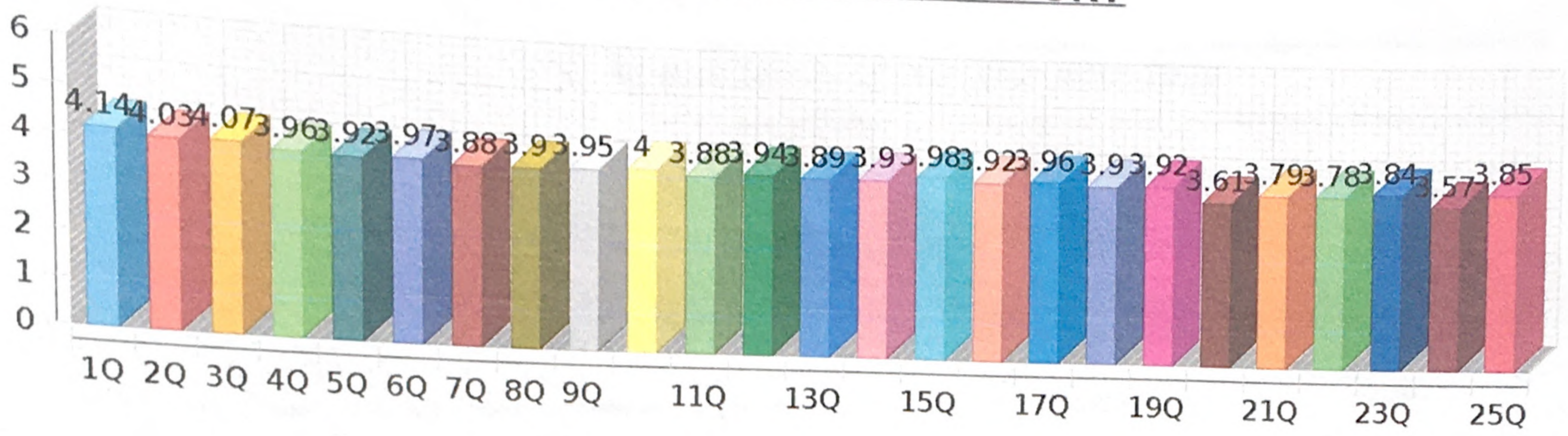
Rating Scale	5	4	3	2	1
Rating	EXCELLENT	VERY GOOD	GOOD	AVERAGE	POOR

SL.No	QUESTION	RATING
1	Quality of Education	4.13
2	Faculty Contribution to your academic growth-Development of critical thinking skills/Referencing skills/Departmental news letters/journals	4.02
3	Learning Environment	4.07
4	Awareness programs/Sensitization programs-rallies,walkathons,prism visits/Leadership training camps	3.96
5	College manual & calendar of events/Prospectus/College magazine	3.91
6	Revision/Remedial classes	3.97
7	Retreats/Communion and Chapel services	3.87
8	Theme building activities-Class tuck shops,Graffiti,Class Assemblies,Outreach programs,Wall Journals -Bulletin boards & News boards	3.89
9	Innovative Teaching Methods-ICT,Group discussions,Group work/Peer teaching/Screening of textual adaptations/Performances of textual material through dramas/Plays,lectures & presentations by students	3.94
10	Internships/projects/assignments	3.99
11	Certificate courses/value added courses	3.88
12	Observance of events & occasions-Fresher's day/Talent hunt/Teacher's day/Christmas programs etc	3.93
13	Laboratories and its facilities-Science labs/Psychology lab/Language lab/Commerce and Management lab	3.88
14	Departmental Events-Inter class competitions/Hindi Divas/Kannada Nadu Nudi Habba etc	3.90
15	Value Education-Personality development,Morals and Ethics classes	3.98
16	Student counselling/Career guidance/Anti Ragging Cell	3.92
17	Mentor-Ward System	3.96
18	NCC/NSS/Eco Watch/Rotaract/Legal Literacy programme/SCM/YWCA/Youth Red Cross/Choir/Incubation and Innovation centre/Entrepreneurship(E Cell)	3.89
19	Seminars/Workshops/Guest lectures	3.92
20	Field visits/Industrial trips	3.60
21	Medical checkups/Blood donation camps/Infirmary	3.78
22	Theme based Assemblies	3.78
23	Culture Awareness Programs-Cultural week/Ethnic day/Field trips to places of cultural significance etc	3.84
24	Excursions /One day trips	3.56
25	Intercollegiate Literary & Cultural Fests	3.84
	<b>AVERAGE</b>	<b>3.90</b>

Aug 26, 2023 2:55 PM

**PRINCIPAL**  
Bishop Cotton Women's Christian College  
No. 19, 3rd Cross, C.S.I. Compound  
Bangalore - 560 027

## FEEDBACK ANALYSIS REPORT





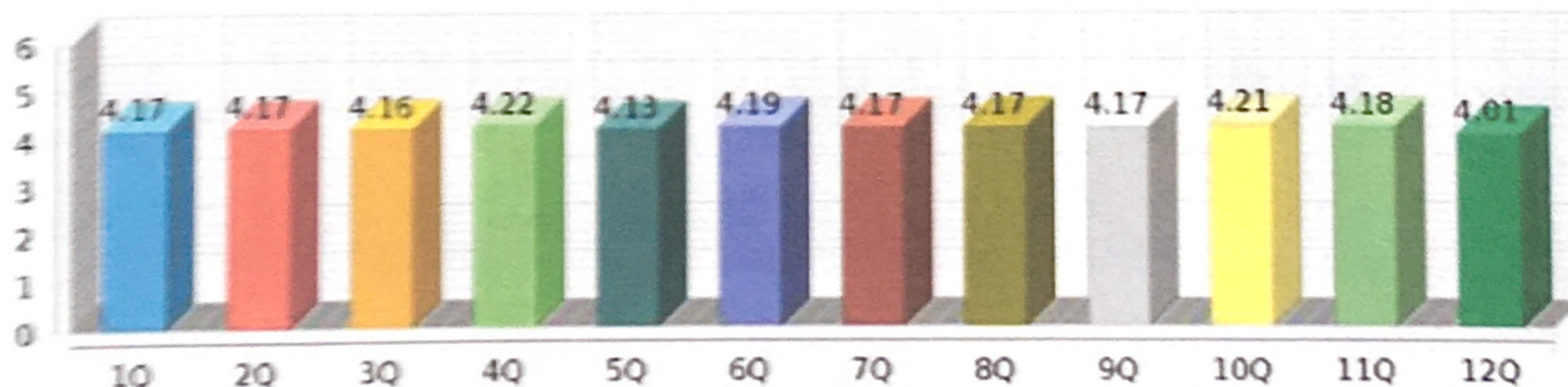
# BISHOP COTTON WOMEN'S CHRISTIAN COLLEGE

No 19, 3rd cross, C.S.I Compound Bangalore - 560027

## College Feedback For The Academic Year 2022-2023

Rating Scale	5	4	3	2	1
Rating	ROLE MODEL	EXCELLENT	GOOD	AVERAGE	NEEDS TO IMPROVE
No of Students : 217					
Sl.No	QUESTION				RATING
1	Preparedness and delivery in the class/Lecture notes, Organization of course content/Topics/problem solving interactions				4.16
2	Communication and Teaching skills of the faculty member(Fluency,talk flow,black board usage)				4.17
3	Encouragement to ask questions and helping in clearing doubts/Willingness to listen to the concerns of the student.				4.15
4	Regularity and punctual in taking classes				4.21
5	Makes difficult concepts seem easy through real world examples, activities, simulation tools/models				4.12
6	Continuous Assessment paper setting and evaluation is fair and transparent				4.18
7	Efficient utilization of class time and Coverage of syllabus at appropriate pace				4.17
8	Has good command and control over the class/ General relationship and interactions with students				4.17
9	Value based teaching and guidance for future growth				4.16
10	Enthusiasm of the faculty member and confidence level of the Faculty member				4.21
11	Maintenance of professional standards and ethics. Motivational and inspirational ability of the teacher.				4.18
12	Technology Integrated teaching methodology in class - ICT, syllabus based audio, video and Efficient usage of online platforms.				4.01
AVERAGE					4.16

## FEEDBACK ANALYSIS REPORT



Aug 26, 2023 2:56 PM

**PRINCIPAL**  
Bishop Cotton Women's Christian College  
No. 19, 3rd Cross, C.S.I. Compound  
Bengaluru - 560 027



# BISHOP COTTON WOMEN'S CHRISTIAN COLLEGE

No 19, 3rd cross, C.S.I Compound Bangalore - 560027

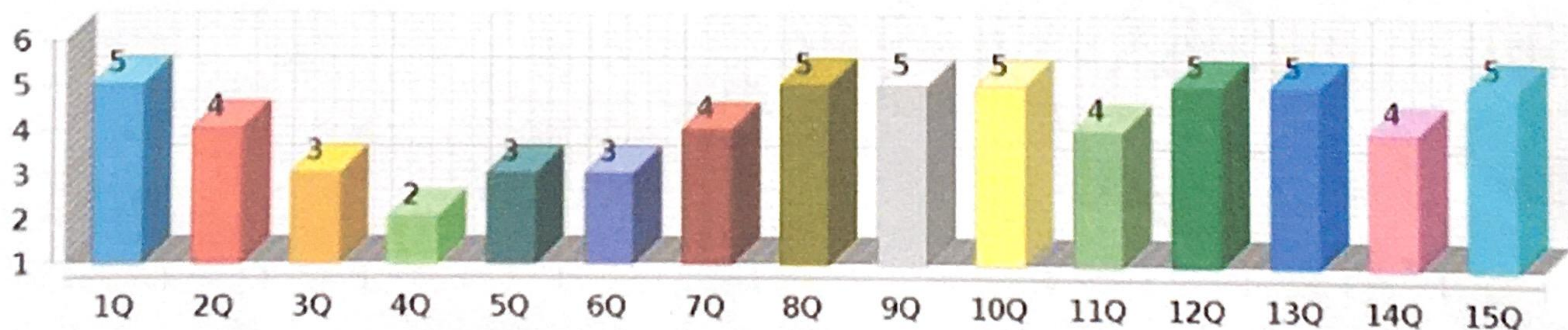
## FACULTY ~~College~~ Feedback For The Academic Year 2022-2023

Rating Scale	5	4	3	2	1
Rating	EXCELLENT	VERY GOOD	GOOD	AVERAGE	POOR

Faculty Count: 50

SL NO.	QUESTION	RATING
1	Schedule of Workload/ Classes and Maintenance of Work Record.	5
2	Participation in workshops/ webinars/FDP/conferences/orientation programmes.	4
3	The department organised syllabus-based webinars / workshops for the students.	3
4	Online motivational talks/ awareness sessions were held for the students on a regular basis.	2
5	Faculty enrolment in short term courses.	3
6	Organising National / State/Inter-collegiate /Inter- Intra Departmental activities/ programmes/webinars/ competitions for students.	3
7	Guidelines from fellow staff members and the Institution regarding online platform for teaching.	4
8	Online teaching facilitated the use of ICT in class with the use of audios/ videos/ documentaries/ text-based movies/documentaries.	5
9	Completion of syllabus and revision on time.	5
10	Evaluation of students? performance based on online assignments/ projects/ reports/ tests	5
11	Contribution towards Curriculum-BOE/BOS/Text Book Committee/ Paper Setter/Examiner/Reviewer/ Chairperson of University Examinations.	4
12	Welfare Schemes	5
13	College Facilities	5
14	Paper Presentations/Publications	4
15	Staff interpersonal relationship.	5
AVERAGE:		4.13

## FEEDBACK REPORT ANALYSIS



Aug 26, 2023 2:49 PM

PRINCIPAL

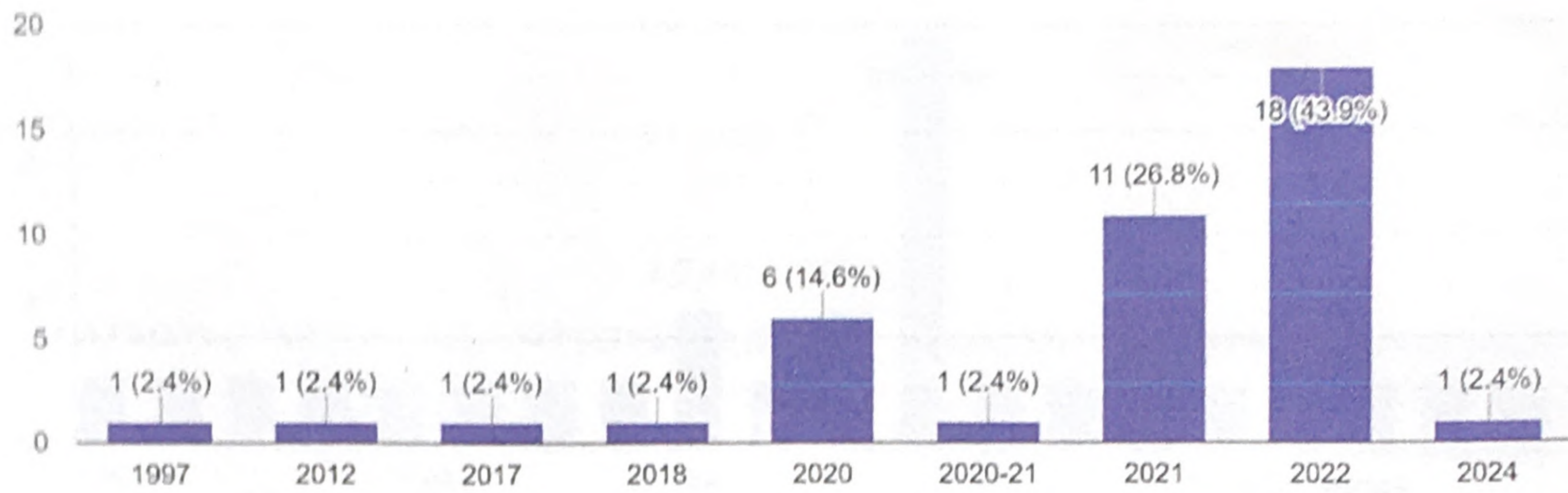
Bishop Cotton Women's Christian College  
No. 19, 3rd Cross, C.S.I. Compound  
Bengaluru - 560 027

# Alumni Feedback

## 2022-23

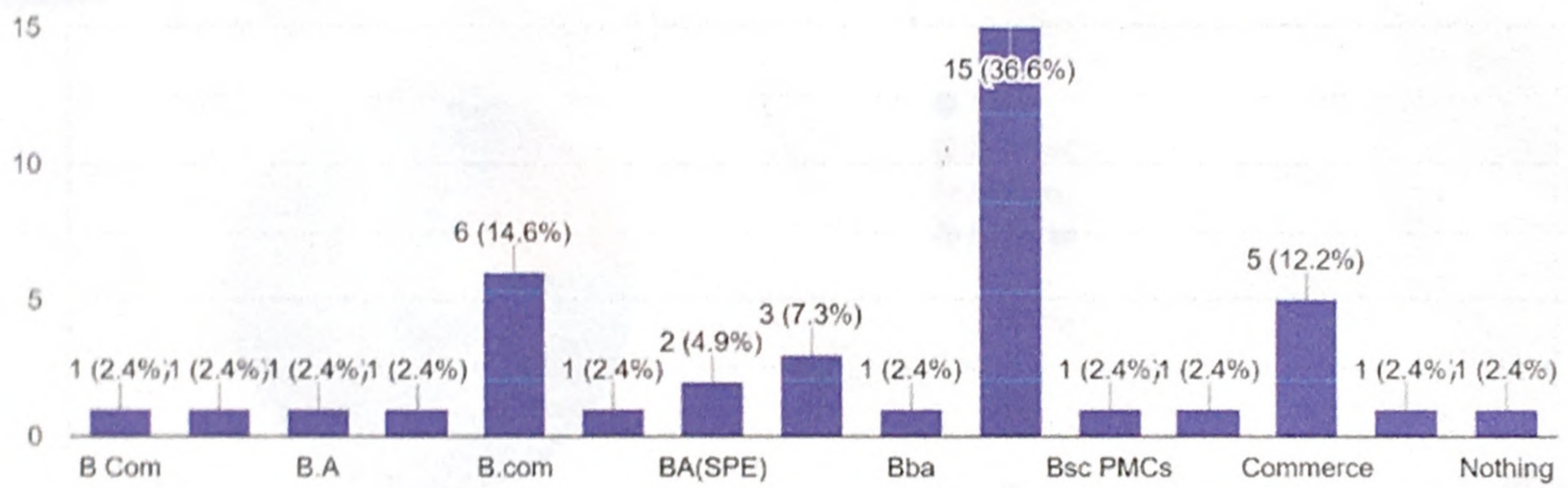
### Year of passing

41 responses



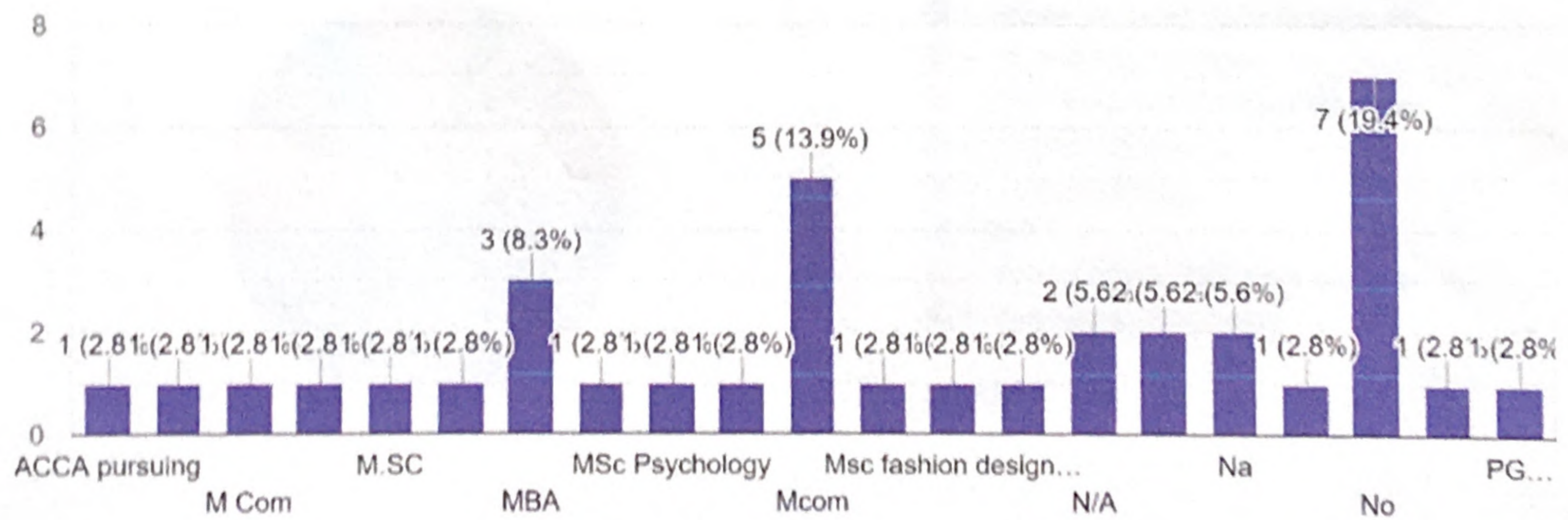
### Stream

41 responses



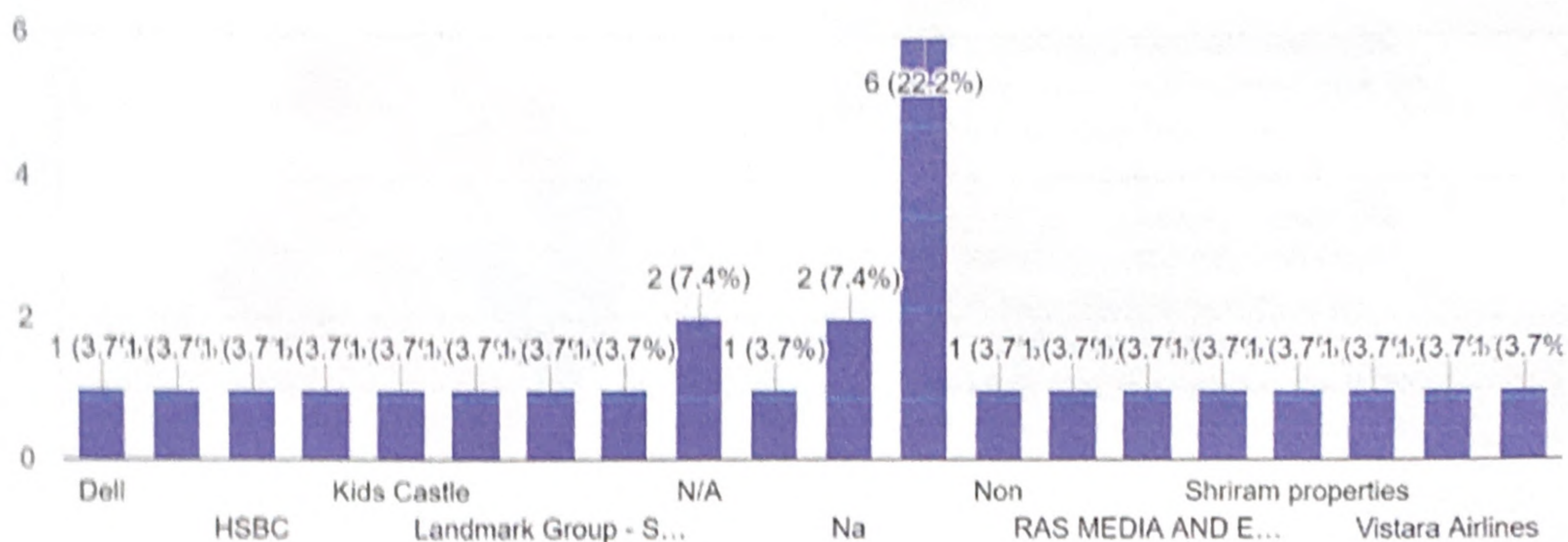
### Higher education (if any)

36 responses



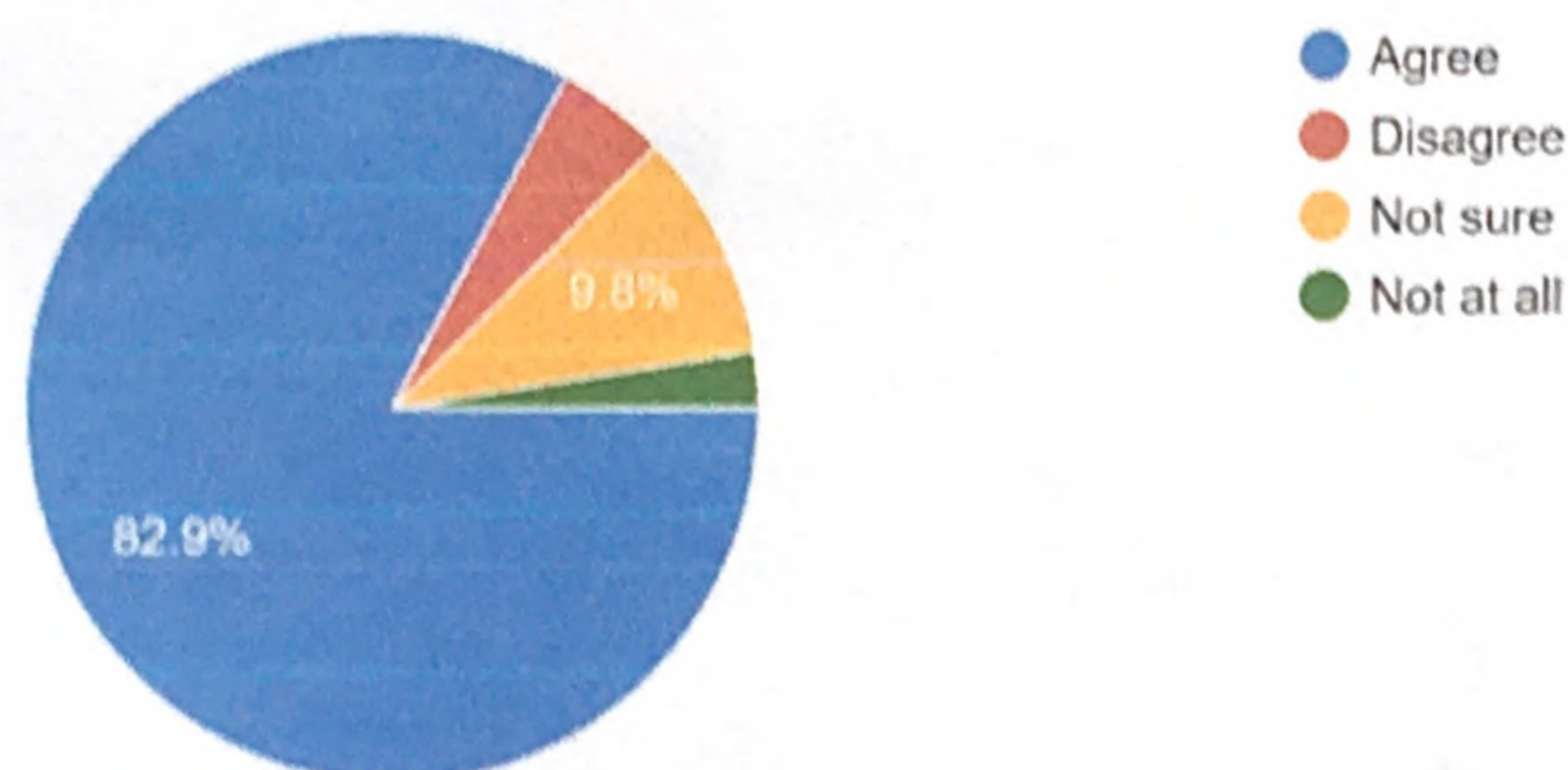
### Present place of employment (if any)

27 responses



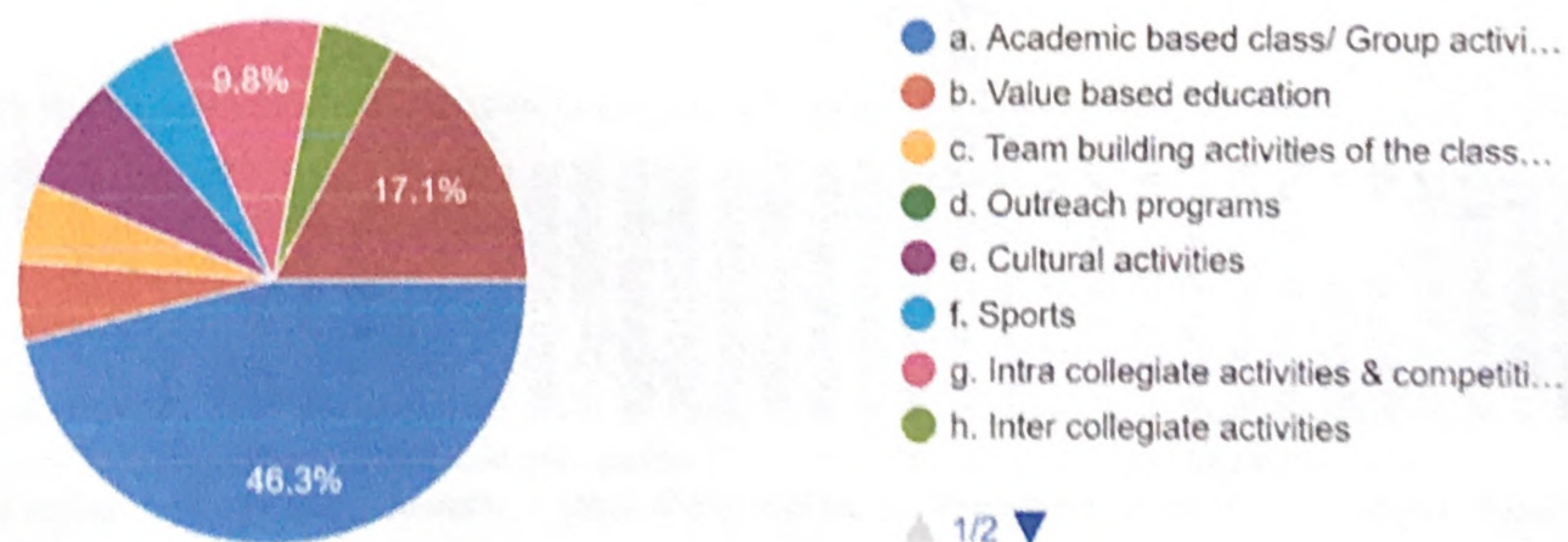
1. The prescribed curriculum for a course, the teaching methodology, field visits, activities, excursions and programs contributed to your growth and evolvment as an individual?

41 responses



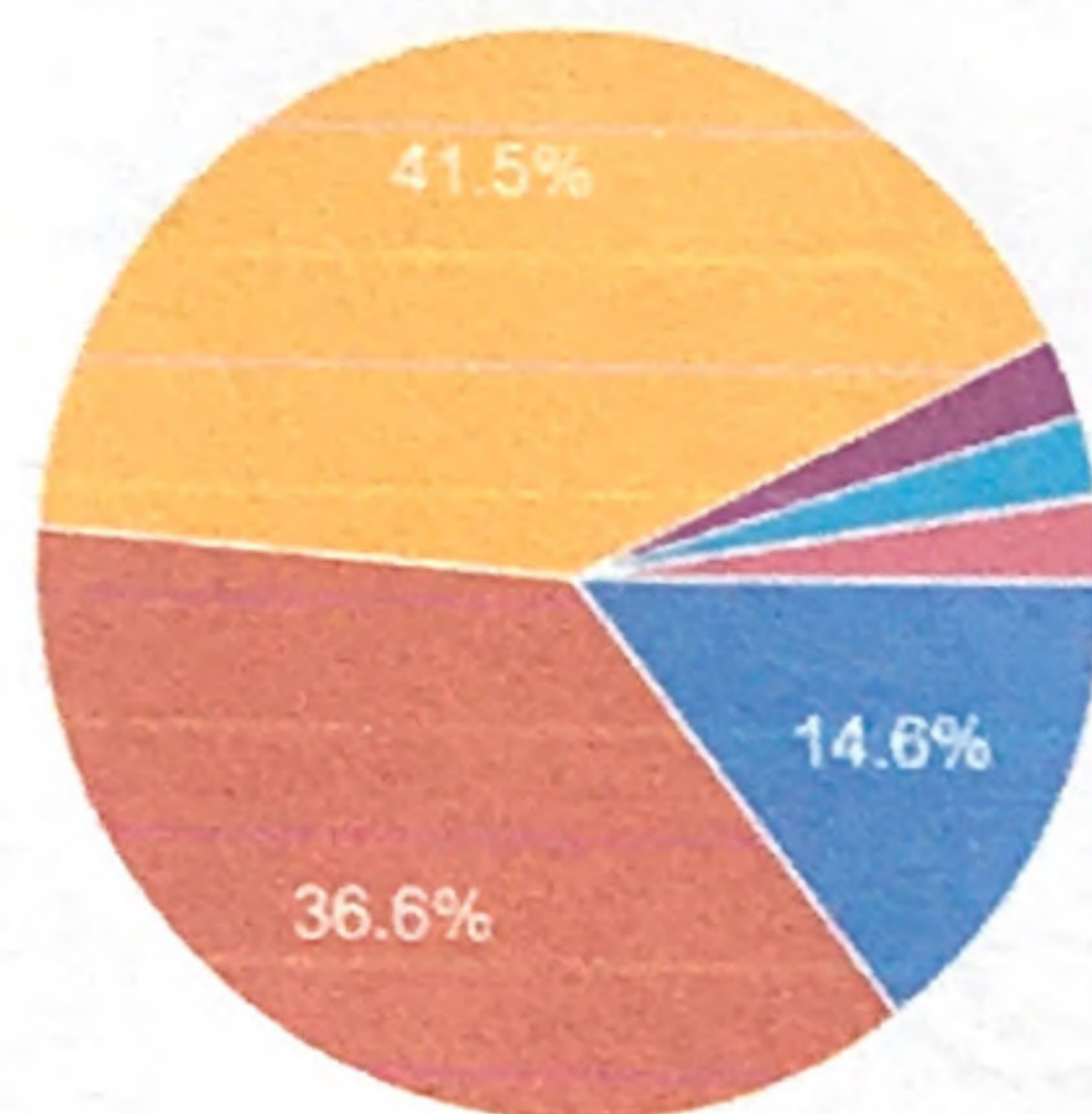
2. Which activities of the class/ club/college moulded you into a better individual.

41 responses



6. How would you like to contribute back to the college?

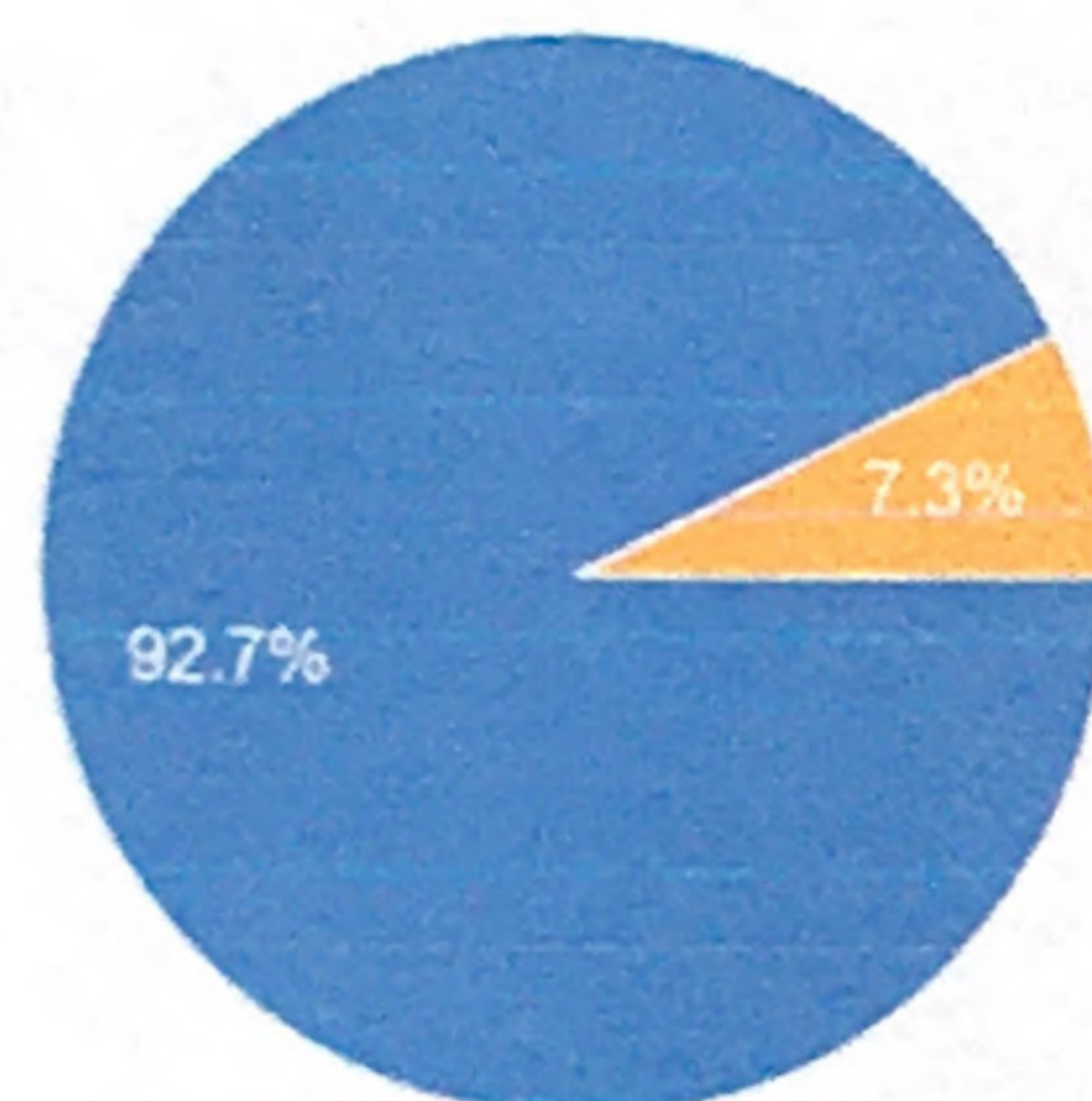
41 responses



- a. Contribute financially towards the education of economically weaker stu...
- b. Organize a talk/session
- c. Support a cause/ project
- d. Initiate a cash prize/award for the topper in the University examination.
- In every possible way I'd love to contribute to my college.
- I don't really that institution like BCWC...
- I would like to become professor to th...

7. Would you recommend Bishop Cotton Women's Christian College to others?

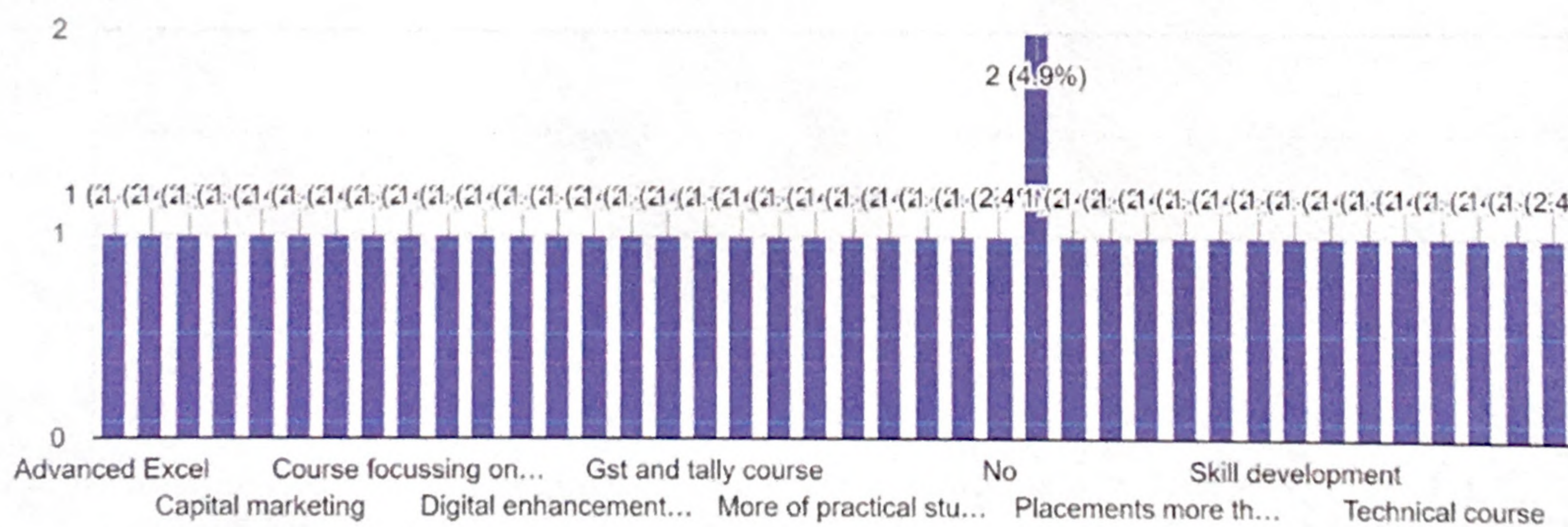
41 responses



- Yes
- No
- not sure

8. A short term course you would recommend to be added as a skill enhancement course for the present students?

41 responses



**PRINCIPAL**

Bishop Cotton Women's Christian College  
No. 19, 3rd Cross, C.S.I. Compound  
Bengaluru - 560 027